

ENGINEERING DESIGN SOLUTION



CHEMTED LLC



EXCELLENCE AND INNOVATION BUILT INTO EVERY DESIGN

INTRODUCTION



- We take pride in introducing “CHEMTED” as a leading company of superior quality in Process Engineering Design of Oil & Gas Sector, Industrial Refrigeration, Marine Refrigeration and Process Chemical Industries. Since our inception, we are constantly providing new solutions to meet the requirement of rapidly advancing technology.



INNOVATIVE ENGINEERING SOLUTIONS

CHEMTED LLC



VISION



- To establish CHEMTED as an EXPERT in Design Engineering by using latest technologies at optimum cost with 100% customer satisfaction.



INNOVATIVE ENGINEERING SOLUTIONS

MISSION



- **CHEMTED's** Principal Mission is to deliver services of the highest caliber; to actively contribute towards the success of our clients. Our company desires to foster long term partnering relationships with our clients.
- **CHEMTED** Stresses superior results. We therefore apply hard word to effective strategies in ensuring the success of our projects. We understand that our success depends on close collaboration with our clients, to set objectives, develop analytical studies and conduct periodic reviews to measure our results against our objectives.



INNOVATIVE ENGINEERING SOLUTIONS

CHEMTED OPERATIONAL PHILOSOPHY



INNOVATIVE ENGINEERING SOLUTIONS

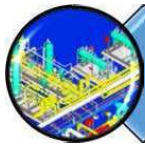
CHEMTED'S PRIVACY POLICY



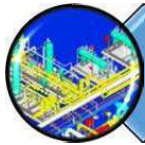
- **CHEMTED** knows that you care how your information is used and shared, and we appreciate your trust that we will do so carefully and sensibly. As there is always some risk in the transmission of data over the Internet through emails etc. But we deem appropriate, we use a combination of industry standard security measures to protect your information.
- Customer's identifiable information or any proprietary design or document shared with us at any stage is kept secure in a way that only authorized employees, agents and contractors (who have agreed to keep information secure and confidential) have access to this information.
- **Contact Us** If you have any questions or comments about privacy on this website, please send us an e-mail at info@chemted.com

Note: The privacy practices set forth in this privacy policy are for our website or any information proprietary design or document exchanged by our valued customer, vendors or any interested parties.

INNOVATIVE ENGINEERING SOLUTIONS



Engineering Design Services



Products Manufacturing

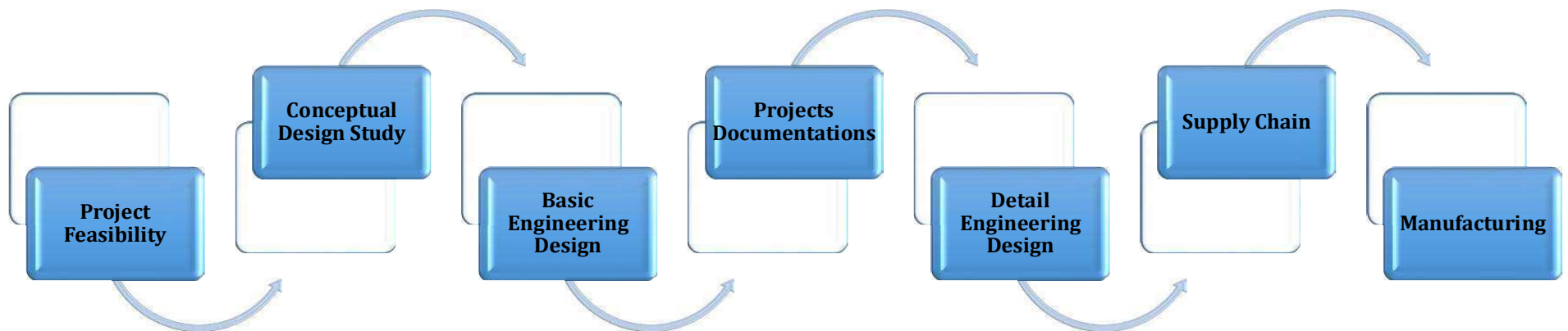


Supply Chain Services



Training & Development

SCOPE OF OUR SERVICES



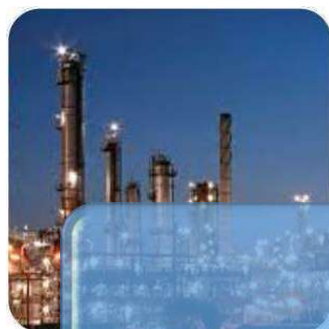
INNOVATIVE ENGINEERING SOLUTIONS

SECTORS OF OUR SERVICES

CHEMTED LLC
Innovative Engineering Solutions



OIL & GAS



**PETROCHEMICAL
INDUSTRIES**



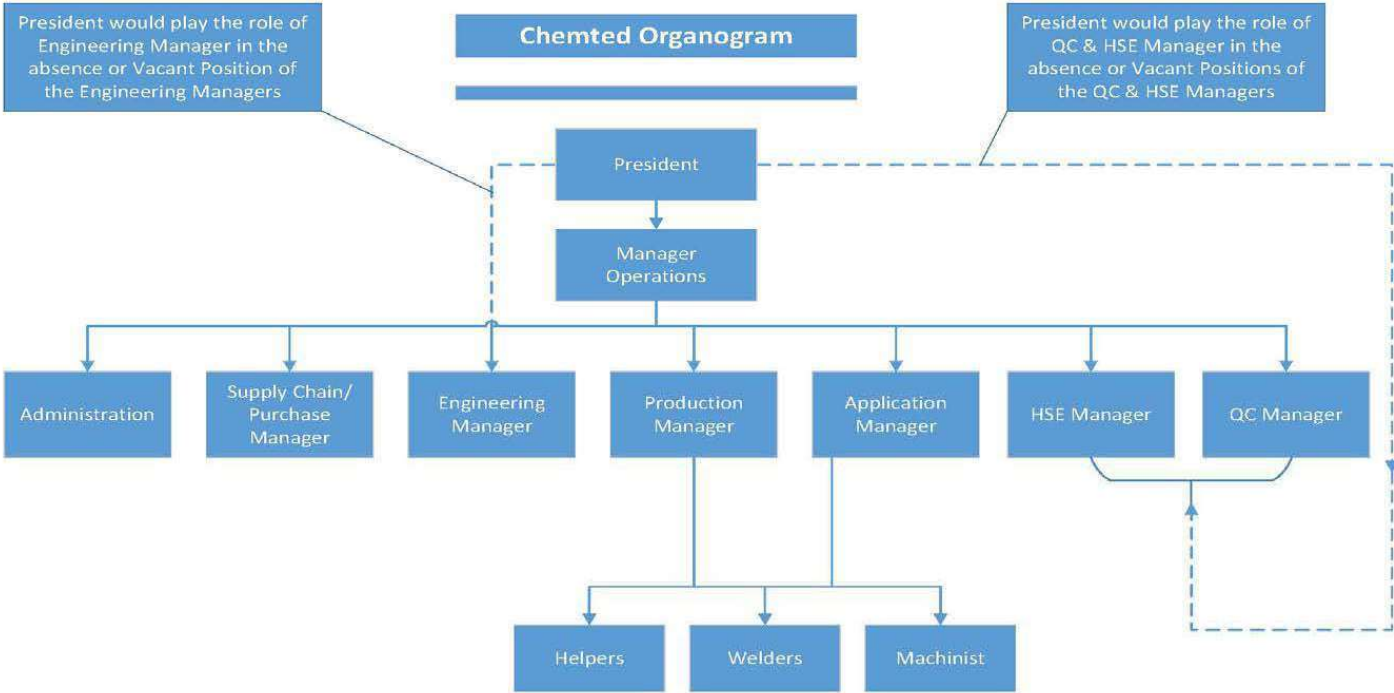
**INDUSTRIAL
REFRIGERATION**



**CHEMICAL PROCESS
INDUSTRIES**

INNOVATIVE ENGINEERING SOLUTIONS

ORGANIZATION CHART

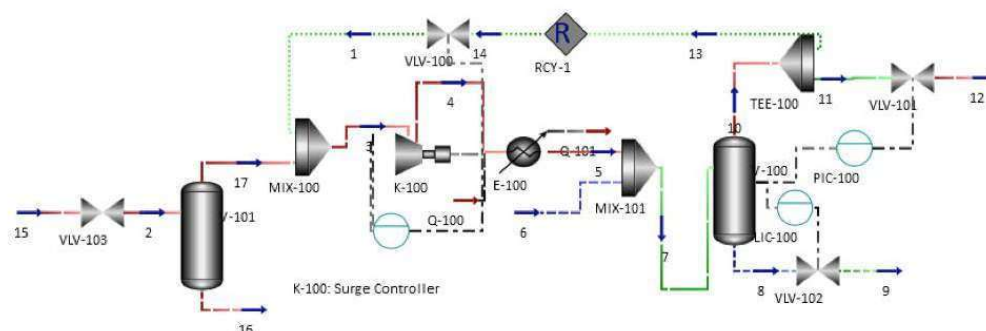


AREAS OF DESIGN SERVICES



Process Engineering Services

- **General Services:**
 - Project definition and scope development
 - Conceptual to appropriation cost estimating
 - Piping and Instrument Diagram (P&ID) development
 - Equipment and instrument specifications
 - Piping, equipment and instrument layout and detailing
 - Plant debottlenecking and process optimization
- **Process Simulations Services as follows:**
 - Hydrocarbon Dew point Control
 - Dehydration Plants
 - Gas Recovery Plants
 - Gas Sweetening Plants
 - Scrubber Packages
 - Separator Packages like 2 & 3 Phase separators, Heavy crude separators & Test separators
 - Tail Gas Clean-up Packages
 - Chemical Injection Package
 - Industrial Refrigeration Systems



INNOVATIVE ENGINEERING SOLUTIONS

AREAS OF DESIGN SERVICES



Static Equipment Services

- **Pressure Vessels:** We design pressure vessels per ASME Sec.VIII,Div.1, PD-5500 and CRN Etc.
- Receivers
- Economizers
- Accumulators
- Intercoolers
- Oil Separators
- Oil Filters
- Oil Pots
- Scrubbers
- Surge Drums



INNOVATIVE ENGINEERING SOLUTIONS

AREAS OF DESIGN SERVICES



Static Equipment Services

- **Shell & Tube Heat Exchangers & PHE:** Per ASME, TEMA & Per specifications of the costumer:
- Evaporators
- Flooded Chillers
- Condensers
- Feed/Bottom Exchanger
- Sub Coolers
- Desuperheaters
- Oil Coolers
- Reboilers
- Thermosyphon
- Gas-to-Gas Heat Exchangers
- Gas-to-Liquid Heat Exchangers



CHEMTED LLC
Innovative Engineering Solutions

CHEMTED IS VERSATILE & HAVE UNIQUE PROFESSIONALS FOR THERMAL DESIGN & FABRICATION OF THE SHELL & TUBE HEAT EXCHANGERS.

S&T HEAT EXCHANGERS

WWW.CHEMTED.COM
+1 (214) 680 6013

INNOVATIVE ENGINEERING SOLUTIONS

AREA OF DESIGN SERVICES



Steel Structure

- Skid Packages Structure
- Static Equipment Structure
- Boiler Complete Structure
- Piping Rack & Pipe Supports
- Pre-Engineering Buildings
- Flare Stacks etc.



INNOVATIVE ENGINEERING SOLUTIONS

AREAS OF DESIGN SERVICES



Other Services

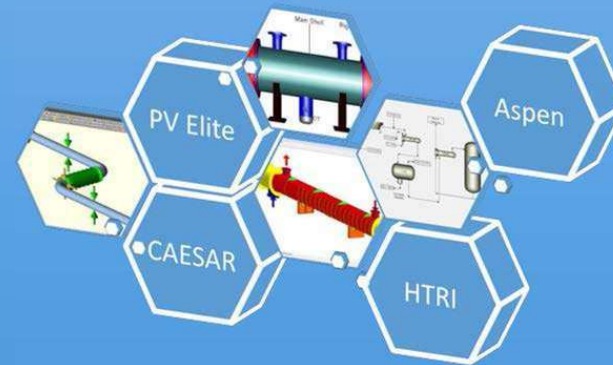
- **Rotary Equipment**
 - Data sheet, Specifications & Material Requisitions preparation (for RFQ). Bid Clarifications (TCLs), Technical Bid evaluation (TBEs) and Report, Vendor document review, Vendor-shop review and evaluations, FAT/SATs attendance for Rotary & Package equipment including performance review, noise & vibration studies.
- **Reports, method statements and construction procedures**
- **Design of Consumer products**
- **Procurement Support (Requisitions, Technical evaluation etc.)**
- **Consultancy services for fabrication and manufacturing**
- **Preparation of Costomers Specifications, Process Datasheets, Pre-BOM & RFQ Documentations**
- **Consultancy services for hydrotest, Pre-commissioning, Commissioning**

INNOVATIVE ENGINEERING SOLUTIONS

Engineering Software:



- Aspen Plus
- HTRI
- PV Elite
- Codeware Compress
- CAESAR
- AutoCAD
- CADWorkx
- STAAD Pro
- RAM Connection
- Ansys Workbench
- Nozzle Pro



PRODUCTS



Skid Packages

We provide engineering services & manufacturing skid based systems that includes followings

- Gas Compression Packages
- Oil Removal Packages
- Natural Gas processing Packages which includes
- Dehydration
- Fractionation
- Condensate Stabilization
- Amine Sweetening
- Cryogenic Processing
- Control System
- Dew Point Control
- Water Chillers
- Process Gas Chilling
- Air or Nitrogen Chilling
- Glycol Chillers
- NGL Recovery System
- Cascade Refrigerant System
- Food Processing & Storage Refrigerant System

INNOVATIVE ENGINEERING SOLUTIONS

PRODUCTS



Static Equipment

We at Chemted always ensure that our thermal selection & production would be cost effective in regarding to the capital cost & as well as in operating cost.

- Evaporators
- Condensers
- Refrigeration Condensers
- Pre-Coolers
- Receivers
- Economizers
- Accumulators
- Oil Separators
- Oil Filters
- Reboilers
- Flooded, Chillers
- Fixed tube sheet oil coolers,
- U-Tube and Removable bundle heat exchangers
- Oil Coolers
- Oil Pots
- Scrubbers
- Surge Drums
- Inter-Coolers
- After-Coolers
- Product Coolers

INNOVATIVE ENGINEERING SOLUTIONS

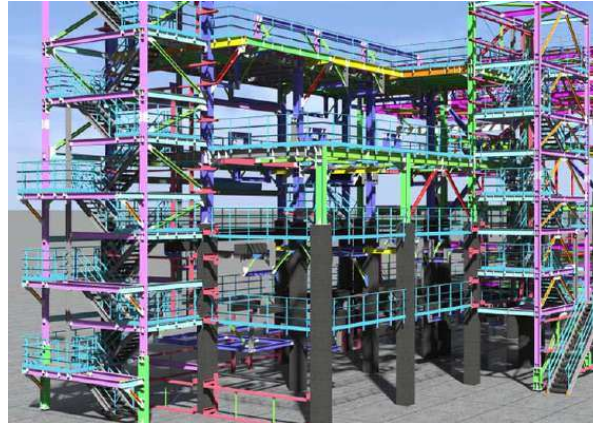
PRODUCTS



Steel Structure

Some of the steel structure we commonly offer for production are:

- Skid Packages Structure
- Static Equipment Structure
- Boiler Complete Structure
- Piping Rack & Pipe Supports
- Pre-Engineering Buildings
- Flare Stacks etc.



INNOVATIVE ENGINEERING SOLUTIONS

AREA



| Description | Area, Sq ft |
|---------------------------------|-------------|
| ASME Shop | 53,000 |
| Office Building | 31,000 |
| Non-Coded Manufacturing Shop | 39,000 |
| Machine Shop | 25,000 |
| Other Buildings | 28,000 |
| Open Area for Future Extensions | 194,000 |
| Total Area | 370,000 |

INNOVATIVE ENGINEERING SOLUTIONS

OUR WORKSHOP

We have state of the art facilities in the covered area of Approx. 53,000 sq. ft.

Here are some of the pictures

ASME SHOP



INNOVATIVE ENGINEERING SOLUTIONS

OUR WORKSHOP

Office Building



INNOVATIVE ENGINEERING SOLUTIONS

OUR WORKSHOP

Non-Coded Manufacturing Shop



INNOVATIVE ENGINEERING SOLUTIONS

OUR WORKSHOP

Machine Shop



INNOVATIVE ENGINEERING SOLUTIONS

OUR WORKSHOP- MACHINERY LIST

CHEMTED LLC
Innovative Engineering Solutions



| Description | Capacity | Quantity |
|----------------------|----------|----------|
| Over Head Cranes | 10 Tons | 3 |
| Over Head Cranes | 5 Tons | 1 |
| Fork Lifter- Toyota | 10 Tons | 2 |
| Fork Lifter- Clark | 6 Tons | 2 |
| Fork Lifter- Hyundai | 6 Tons | 1 |
| Tractor | 4 Tons | 1 |

INNOVATIVE ENGINEERING SOLUTIONS

OUR WORKSHOP- MACHINERY LIST



| Description | Capacity | Quantity |
|-------------------------|------------------|----------|
| Press Brake | 230 Tons | 1 |
| Press Brake | 350 Tons | 1 |
| Plasma Cutting Machine | 40 Ft | 1 |
| Plasma Cutting Machine | 20 Ft | 1 |
| Sub-Arc Welding Machine | 6 Ft Manipulator | 2 |
| Rolling Machine | 3" Thk | 1 |

INNOVATIVE ENGINEERING SOLUTIONS

OUR WORKSHOP- MACHINERY LIST



| Description | Capacity | Quantity |
|--------------------------|------------|----------|
| Auto Gas Cutting Machine | up to 2.5" | 2 |
| Copy Gas Cutting Machine | up to 2.5" | 1 |
| Power Cutter Machine | | 4 |
| Power Hacksaw Machine | | 3 |
| Shearing Machine | | 1 |
| Bending Machine | | 1 |

INNOVATIVE ENGINEERING SOLUTIONS

OUR WORKSHOP- MACHINERY LIST



| Description | Capacity | Quantity |
|----------------------|----------------------|----------|
| Pipe Rolling Machine | Max Ø 2"Pipe rolling | 1 |
| Welding Plants | | 14 |
| Pipe Bending Machine | 1/2" to 4" | 1 |
| Nibbling Machine | 15-30 Ton | 1 |
| Milling Machine | Length 45" | 1 |
| Lathe Machine | | 1 |

INNOVATIVE ENGINEERING SOLUTIONS

OUR WORKSHOP- MACHINERY LIST



| Description | Capacity | Quantity |
|-----------------------------|-------------------------|----------|
| Radial Drill Machine | 3/8" to,8"Hole | 1 |
| Fix Drill Machine | 5mm-42mm dia | 1 |
| Magnet Drill Machine | Max 25mm Hole | 2 |
| CNC Machine (Plate Holling) | Holling Max 12 To, 23mm | 1 |
| Shaper Machine | | 2 |
| Surface Grinder Machine | | 1 |

INNOVATIVE ENGINEERING SOLUTIONS

OUR WORKSHOP- MACHINERY LIST



| Description | Capacity | Quantity |
|-----------------------|-----------|----------|
| Table Grinder Machine | | 1 |
| Air Compressor | 5-20 bar | 2 |
| Deisel Generator | 35-310KVA | 1 |

INNOVATIVE ENGINEERING SOLUTIONS

OUR WORKSHOP



INNOVATIVE ENGINEERING SOLUTIONS

OUR WORKSHOP



INNOVATIVE ENGINEERING SOLUTIONS

OUR WORKSHOP



INNOVATIVE ENGINEERING SOLUTIONS

OUR WORKSHOP



INNOVATIVE ENGINEERING SOLUTIONS

OUR WORKSHOP



INNOVATIVE ENGINEERING SOLUTIONS

OUR WORKSHOP



INNOVATIVE ENGINEERING SOLUTIONS

OUR WORKSHOP



INNOVATIVE ENGINEERING SOLUTIONS

OUR WORKSHOP



INNOVATIVE ENGINEERING SOLUTIONS

OUR WORKSHOP



INNOVATIVE ENGINEERING SOLUTIONS

OUR WORKSHOP



INNOVATIVE ENGINEERING SOLUTIONS

OUR WORKSHOP



INNOVATIVE ENGINEERING SOLUTIONS

PROJECTS



Big Tex Sand Screen CTB 250 that allows for continuous operation while providing maintenance. Built utilizing the Texas Giant Sand Screen technology.
2 Leg – 2 Phase Screen with configurations of 100 mesh with a 200 mesh or 100 mesh with a 250 mesh.

INNOVATIVE ENGINEERING SOLUTIONS

PROJECTS



SAND SCREENS

INNOVATIVE ENGINEERING SOLUTIONS

PROJECTS



SKID MOUNTED SEPARATOR

INNOVATIVE ENGINEERING SOLUTIONS

PROJECTS



SKID MOUNTED TEST SEPARATOR

INNOVATIVE ENGINEERING SOLUTIONS

PROJECTS



PRESSURE VESSEL OF DIFFERENT CAPACITIES

INNOVATIVE ENGINEERING SOLUTIONS

PROJECTS



VESSEL

INNOVATIVE ENGINEERING SOLUTIONS

PROJECTS



HORIZONTAL VAPOR RECOVERY VESSEL



INNOVATIVE ENGINEERING SOLUTIONS

PROJECTS



FIRE TUBE VESSELS

INNOVATIVE ENGINEERING SOLUTIONS

PROJECTS



OIL SEPARATORS WITH COMPRESSOR AND MOTOR STRUCTURES ON TOP

INNOVATIVE ENGINEERING SOLUTIONS

PROJECTS



CRUDE OIL EXCHANGERS



INNOVATIVE ENGINEERING SOLUTIONS

CERTIFICATIONS

The American Society of Mechanical Engineers



CERTIFICATE OF AUTHORIZATION

The named company is authorized by The American Society of Mechanical Engineers (ASME) for the scope of activity shown below in accordance with the applicable rules of the ASME Boiler and Pressure Vessel Code. The use of the ASME Single Certification Mark and the authority granted by this Certificate of Authorization are subject to the provisions of the agreement set forth in the application. Any construction stamped with the ASME Single Certification Mark shall have been built strictly in accordance with the provisions of the ASME Boiler and Pressure Vessel Code.

COMPANY:

CHEMTED LLC
981 N HWY TX-174
Rio Vista, Texas 76093
United States

SCOPE:

Manufacture of pressure vessels at the above location and field sites controlled by the above location (This authorization does not cover impregnated graphite)

AUTHORIZED: March 06, 2023

EXPIRES: February 17, 2026

CERTIFICATE NUMBER: 58542

Ruth B. Caplan

Board Chair, Conformity Assessment

JM Eisenberg

Managing Director, Standards & Engineering Services



CERTIFICATE OF AUTHORIZATION

The named company is authorized by The American Society of Mechanical Engineers (ASME) for the scope of activity shown below in accordance with the applicable rules of the ASME Boiler and Pressure Vessel Code. The use of the ASME Single Certification Mark and the authority granted by this Certificate of Authorization are subject to the provisions of the agreement set forth in the application. Any construction stamped with the ASME Single Certification Mark shall have been built strictly in accordance with the provisions of the ASME Boiler and Pressure Vessel Code.

COMPANY:

CHEMTED LLC
981 N HWY TX-174
Rio Vista, Texas 76093
United States

SCOPE:

Manufacture of Class 1 and Class 2 pressure vessels at the above location and field sites controlled by the above location

AUTHORIZED: February 17, 2023

EXPIRES: February 17, 2026

CERTIFICATE NUMBER: 60659

Ruth B. Caplan

Board Chair, Conformity Assessment

JM Eisenberg

Managing Director, Standards & Engineering Services



CHEMTED LLC
Innovative Engineering Solutions



INNOVATIVE ENGINEERING SOLUTIONS

CERTIFICATIONS

CHEMTED LLC
Innovative Engineering Solutions



THE NATIONAL BOARD
OF
BOILER & PRESSURE VESSEL INSPECTORS

Certificate of Authorization



This is to certify that
CHEMTED LLC
981 N HWY TX-174
Rio Vista, Texas 76093
United States

is authorized to use the R Symbol in accordance with the provisions of the National Board Inspection Code and NB-415, Accreditation of "R" Repair Organizations.

All activities within the scope of this Authorization shall be controlled by the above location.
The scope of this Authorization is limited to:

Metallic
Repairs and Alterations
At
Shop and Field Locations




Certification Number: 11333

Issue Date: March 6, 2023
Expiration Date: February 17, 2026
Executive Director: 

THE NATIONAL BOARD
OF
BOILER & PRESSURE VESSEL INSPECTORS

Certificate of Authorization to Register



This is to certify that
CHEMTED LLC
981 N HWY TX-174
Rio Vista, Texas 76093
United States

is authorized to apply the "NB" mark and register boilers, pressure vessels or other pressure retaining items with the National Board.


The scope of Authorization is limited to items manufactured in accordance with:

ASME Designator(s): U, U2

Issue Date: March 6, 2020

Revision Date: February 17, 2023

This Certificate of Authorization to Register will remain in effect as long as the manufacturing organization holds a valid Certificate of Authorization issued by the American Society of Mechanical Engineers.

Executive Director: 

INNOVATIVE ENGINEERING SOLUTIONS

CERTIFICATIONS





The American Society of Mechanical Engineers

CERTIFICATE OF AUTHORIZATION

The named company is authorized by The American Society of Mechanical Engineers (ASME) for the scope of activity shown below in accordance with the applicable rules of the ASME Boiler and Pressure Vessel Code. The use of the ASME Single Certification Mark and the authority granted by this Certificate of Authorization are subject to the provisions of the agreement set forth in the application. Any construction stamped with the ASME Single Certification Mark shall have been built strictly in accordance with the provisions of the ASME Boiler and Pressure Vessel Code.

COMPANY:

CHEMTED LLC
981 N HWY TX-174
Rio Vista, Texas 76093
United States

SCOPE:

Manufacture and assembly of power boilers at the above location and field sites controlled by the above location

AUTHORIZED: May 17, 2024
EXPIRES: May 17, 2027
CERTIFICATE NUMBER: 61583



Richard B. Cyphur
Board Chair,
Conformity Assessment



Matthew Vanguey
Senior Director,
Engineering Operations

INNOVATIVE ENGINEERING SOLUTIONS

CERTIFICATIONS

Nov 2018

APPROACHABLE
ISOQAR

Certificate of Registration

This is to certify that the Quality Management System of:

Chemted, LLC.

981 N Highway 174, Rio Vista, TX 76093

has been approved by ISOQAR to the following standard(s)

ISO 9001 : 2015

Certificate Number: **18001QMS001**

Scope of Activities: **Design, Manufacture and Repair of Pressure Vessels,
Heat Exchangers and Process Systems.**

Signed:
(on behalf of ISOQAR) *Andrew Smith*

Initial Registration Date: **28 February 2020**

Issue Date: **28 February 2023**

Expiry Date: **27 February 2026**



ISOQAR
QUALITY ASSURED
ISO 9001



ANAB
ACCREDITED
MANAGEMENT SYSTEMS
CERTIFICATION BODY



IAF
INTERNATIONAL
ACCREDITATION
FORUM

This certificate has been issued by ISOQAR Inc, 24840 Burnt Pine Drive, Suite 5, Bonita Springs, FL 34134, USA and will remain current subject to the company maintaining its system to the required standard(s). This will be monitored regularly by ISOQAR. The use of the ANAB Accreditation Mark indicates Accreditation in respect of those activities covered by the Accreditation Certificate. Further clarification regarding the scope of this certificate and the applicability of the standard requirements may be obtained by consulting the organization

1 239 947 6980 www.isoqarinc.com

This certificate is the property of ISOQAR and must be returned on request

CHEMTED LLC
Innovative Engineering Solutions



INNOVATIVE ENGINEERING SOLUTIONS

REGISTRATIONS



We design, fabricate and supply our equipment and other engineering systems according to Canadian Registration (CRN), Tubular Exchangers Manufacturers Association (TEMA) Standard, API 660 and PD 5500.



INNOVATIVE ENGINEERING SOLUTIONS

CONTACT US



Corporate Office

 info@chemted.com

 www.chemted.com

 +1 214 680 6013

 981 N HWY TX-174 Rio Vista,
Texas- 76063 United States

Middle East Office

 info@chemted.com

 www.chemted.com

 +1 (724) 398-9396

 16-04 Al Hulaila Industrial
Zone-FZ RAK, UAE

South Asia Office

 www.chemted.com

 +92 042 35948701

 127 Aurangzeb Block, New
Garden Town, Lahore, Pakistan



INNOVATIVE ENGINEERING SOLUTIONS